

Quick TV Mode Settings

For quick settings of the output video mode, please use the "TV Mode" key, followed one of the numeric keys, as below:

- TV Mode + 0 = Auto TV mode
- TV Mode + 1 = Component/Composite NTSC 480i
- TV Mode + 2 = Component/Composite PAL 576i
- TV Mode + 3 = reserved
- TV Mode + 4 = Component 720p60
- TV Mode + 5 = Component 1080i60
- TV Mode + 6 = Component 1080p60
- TV Mode + 7 = HDMI 720p60
- TV Mode + 8 = HDMI 1080i60
- TV Mode + 9 = HDMI 1080p60
- TV Mode + CAPS/NUM = Toggles between 50Hz and 60Hz

Interface

On first starting the NMT, the following navigation options are available:

Media Source

This page is used to select which source you want to stream content from. If a hard drive is connected it will show as the first item on the list.



Figure 1.0 : Media Source screen

Web Services

This page gives you access to Internet based services like the Media Service Portal(MSP), BitTorrent client status display and customizable URL's for your most frequently visited sites .



Figure 2.0 : Web Services screen

Setup Page

This page allows you to configure various settings for your device:

- Home**
 - Takes you back to the Media Source page, or the last server you logged into.
- Preferences**
 - General settings for the device like languages, subtitle languages, photo transition effects, locking the Setup pages, etc.
- Note:** To unlock Setup pages, press Setup, follow by the Play key.
- Audio / Video**
 - Digital/Analogue Video output settings as well as aspect ratio control and digital/analogue audio output settings.
- Network**
 - Displays current IP information and allows configuration of network and timezone settings.
- Network Share**
 - Configure your remote SMB and NFS shared folders here. You can choose to browse the available SMB shares on a Samba network. NFS shares will have to be entered manually. URL format for the network share paths:
SMB - smb://<ip address>/dir
NFS - nfs://<ip address>/dir (note the extra colon after IP address)
- nfs-tcp://<ip address>/dir (NFS using TCP protocol instead of UDP)
- NMT Applications***
 - Configure the NMT media servers run state, SMB workgroup, device name and also the unified password which applies to both SMB and FTP access. Torrent settings allows the configuration of the BitTorrent client.
- DVD / Audio CD****
 - Configure DVD and AudioCD playback settings.
- Maintenance**
 - Displays the current device firmware version and options for firmware update and NMT morphing**

- * Only available with HDD and NMT apps installed
- ** Only if a DVD-ROM is attached (by USB, IDE or SATA)
- *** Refer to Page (x) for more details



Figure 3.0 : Setup Maintenance screen

Media Servers

This section of the guide provides more detail on the various media servers available.

UPnP AV or DLNA Server

The NMT will automatically detect all available UPnP AV or DLNA compliant content servers on bootup and list them on the Media Source page. No additional setup is necessary on the NMT itself. Some servers may require additional authorization configuration on the server side, such as the WMP-NSS described next.

Windows Media Player Network Sharing Service (WMP-NSS)

To enable WMP-NSS sharing to the NMT, the NMT must first be authorized. From the WMP-NSS application, select the following menu options:

Tools->Options->Library->Configure Sharing

Click the checkbox next to the "Share my media to" menu item. You should now have a list of detected devices to choose from on the menu below. Selecting a listed device and Right Clicking on it will show you a list of options. Select Properties to view details about each device. Find the device that matches the MAC address of your NMT and select the "Allow" menu item.

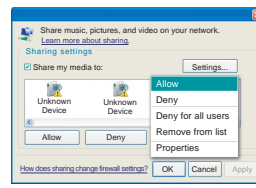


Figure 4.0 : Media Sharing screen

Note: The NMT's MAC address can be found from the NMT's Setup->Network page. It will be listed under the "Ethernet Configuration" heading.

Syabas CE-HTML Server

Syabas provides a proprietary server for use with the NMT. Simply install the server available for download at the following link:

<http://www.networkedmediatank.com/download/myihome.html>

Once installed, the server should be automatically detected by the NMT and added to the Media Source page list.

Third Party HTML-based Servers

Due to the NMT's support for HTML based media stream extensions, there are many open-source third party servers that are compatible with the Syabas-based NMT. Some popular examples are:

- SwissCenter (<http://www.swisscenter.co.uk>)
- Link (<http://www.lundman.net/wiki/index.php/Link>)
- WizD for NMT (<http://hue.users.sonic.net/>)

Third Party developed Applications

With strong support from software developers among the user community, there are various applications that enhances the usage of NMT. Do visit:

<http://www.networkedmediatank.com/viewtopic.php?t=1713>

Setting up the full NMT application suite

The NMT allows for the installation of an optional hard disk drive (HDD) that opens up a range of extra functionality.

If your NMT does not already come with a pre-installed HDD, you can install your own HDD and enable full NMT functionality by following the steps below :

- 1) Turn OFF the NMT
- 2) Attach a HDD directly to the NMT IDE or SATA connector and connect the molex power supply
- 3) Power on the NMT and goto the Setup->Maintenance page and select the "NMT setup wizard" option
- 4) Step through the NMT wizard to partition, format and install NMT applications on the HDD. You can download the application binary onto a USB thumbdrive and use that as the installation source. If you do not have the files to install the NMT applications available, you can opt to install the apps directly from the internet. Please make sure you have a internet connection available and that the NMT is connected to it.

Note: This step will DELETE ALL the data on your HDD !

- 5) After reboot, most of the NMT applications will start up automatically. To manually adjust the settings for the NMT applications, goto the Setup page.

Networked Media Tank (NMT) Functions

Note: The NMT's IP address can be found from the NMT's Setup->Network page.

myiHomeMS UPnP AV Server

A standard UPnP AV server for streaming media directly from the NMT's HDD. The server name will be displayed as '<hostname>: UPnP AV Server'.

Usage Instructions:

- Under Setup->Media Server, you can see the current status of the media server.
- A running server will be detectable and accessible by all UPnP AV or DLNA compliant DMP

myiHomeLite CE-HTML Server

Syabas's proprietary HTML-based media server for streaming content directly from the NMT's HDD. The server name will be displayed as '<hostname>: myihome'.

Usage Instructions:

- Under Setup->Media Server, you can see the current status of the media server. A running server will be detectable and accessible by all DMP running Syabas middleware.
- You can also access this server from a PC by going to the following link from a web browser : <http://<NMT IP Address>:8088/>



Figure 5.0 : NMT Applications Setup screen

FTP Server

Allows easy remote access and management of the NMT's HDD. The server is always running by default after installing the NMT applications.

Usage Instructions:

- The FTP server runs on the default port (21). So just point your FTP client to <NMT IP Address>:21
- Username:** ftpuser
- Password:** 1234 (default)

Note: FTP username is not configurable, but the password can be configured and is shared with the SMB server.

NAS (SMB server)

This server allows a remote PC to access the locally installed HDD on the NMT as a SMB share.

Usage Instructions:

- 1) Click on Start->Run
- 2) Type "\\<NMT Hostname>" or "\\<NMT IP ADDRESS>" into the text box
- 3) To allow for easier accesses to your NMT NAS in future, you can choose to map the SMB share as a drive under your "My Computer" folder of your PC. To do this:
 - a) Type "\\<NMT Hostname>" or "\\<NMT IP ADDRESS>" into the text box. Alternatively you can go to "My Network Places", click on "View workgroup computers", browse and select your NMT device.
 - b) Right click on the shared folder and select "Map Network Drive"

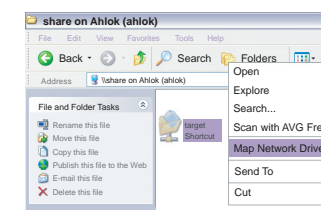


Figure 6.0 : Map Network Drive screen

c) Select the drive you want your NMT shared folders to be represented.

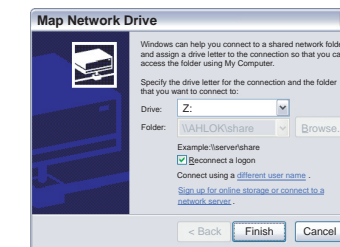


Figure 7.0 : Map Network Drive dialog screen

d) The mapped drive should appear in "My Computer".

- SMB defaults:
Username: nmt
Password: 1234

NAS (NFS server)

This server allows a remote PC to access the locally installed HDD on the NMT as a NFS share.

Usage Instructions:

The path to the NFS server on NMT is <NMT IP ADDRESS>/share

Note: NFS server access is not protected by password.

BitTorrent downloader

A BitTorrent client for direct download to the internal HDD.

Usage Instructions:

- Torrents can be managed by either clicking the Web Services->Torrent links from the NMT, or using a web browser on your PC and going to the following URL : <http://<NMT IP ADDRESS>:8883/torrent/bt.cgi> or follow Torrent links from <http://<NMT IP ADDRESS>:8088>

- Alternatively, for Windows XP, you can goto Start->My Network Places->Network Tasks. Select the 'Show icons for networked UPnP devices' option. The NMT will show up with it's hostname. Double clicking on the icon will bring you to a page that will allow you to select the Torrent option.



Figure 8.0 : Torrent downloader page screen

Note: You can configure the Hostname from the Setup->Preferences->Hostname option on the NMT

- You can upload torrent files and control the torrent download settings from this page.

- Torrent files are started automatically whenever the NMT browser encounters a .torrent file. You can also load .torrent file from USB storage devices.

- You can also configure some client settings from the Setup->Torrent page on the NMT.

USB Slave function

This only applies to some models which ship with a "USB-PC" connector, which allows connection of the NMT to the PC and the HDD on the NMT will appear as a USB HDD to the PC.

Usage Instructions:

1. Power up NMT unit, plug in the provided cable between the "USB-PC" connector to a USB slot on your PC.
2. When the unit is idle or in Browser mode, it will immediately switch the internal HDD to make it visible to the PC as a USB HDD.
3. During this period, the NMT can still function as a basic DMA, all NMT applications will be stopped at this point, however.
4. Note that as the HDD on the NMT is formatted as a EXT3 partition by default, you will need a special driver to support EXT3 on Windows PCs. Linux PCs will be able to support it without additional drivers. A suggested driver is EXT2FSD.
5. After completing your file operation on the USB HDD from your Windows PC, it is advised to "Safely Remove Hardware" by clicking on the USB icon in the Windows taskbar before unplugging the USB connection. Otherwise, a power cycle is required to get the internal HDD back into normal operation.
6. When not using the USB slave function, it is advised not to leave the cable plugged in.

Shutting down, Reboot and Powering down the unit

The Power key will only turns off the display for the unit.

Power + Delete - Shutdown the unit, ready to power off, you will be able to get out of this state except a power cycle. Some models may be able to power off automatically.

Power + USB DVDROM eject - This will trigger a software reset of the unit.

Power + Suspend - This will bring the unit to a low power mode suspend mode, you can still get out of this mode without lengthy rebooting of the unit.

Some models may have a Reset button to initiate a hardware reset.

For additional support, please visit the NMT Forum, <http://www.networkedmediatank.com> also browse the NMT Wiki page, <http://www.networkedmediatank.com/wiki>

Please register your Popcorn Hour product at <http://support.popcornhour.com> for post sales support.